

**NOTICE OF TAX ABATEMENT CONSIDERATION
HANSFORD COUNTY HOSPITAL DISTRICT**

DATE: May 26, 2021

TIME: 6:00 P.M.

PLACE: Conference Room, Hansford County Hospital, 707 Rowland St., Spearman Texas 79081

PURPOSE: The Hansford County Hospital District will discuss and take possible action regarding a tax abatement agreement with Great Prairie Wind III, LLC, pursuant to Chapter 312 of the Texas Tax Code.

Property Owner and Applicant for Tax Abatement: Great Prairie Wind III, LLC

Reinvestment Zone: Great Prairie Wind III, LLC 2 Reinvestment Zone

Property in Reinvestment Zone: See attached map and legal description provided in Exhibit "A" attached hereto and incorporated herein for all purposes.

Anticipated Improvements: The general description of the nature of the improvements included in the agreement is as follows:

Great Prairie Wind III, LLC anticipates constructing a 299 MW windfarm in Hansford County. Improvements would include (but are not limited to) wind turbines, towers, foundations, transformers, pad mounts, underground collection systems, transmission lines, electrical interconnections, met towers, roads, O&M, building, electrical substation, control systems and all eligible ancillary and necessary equipment for commercial wind generation of electricity.

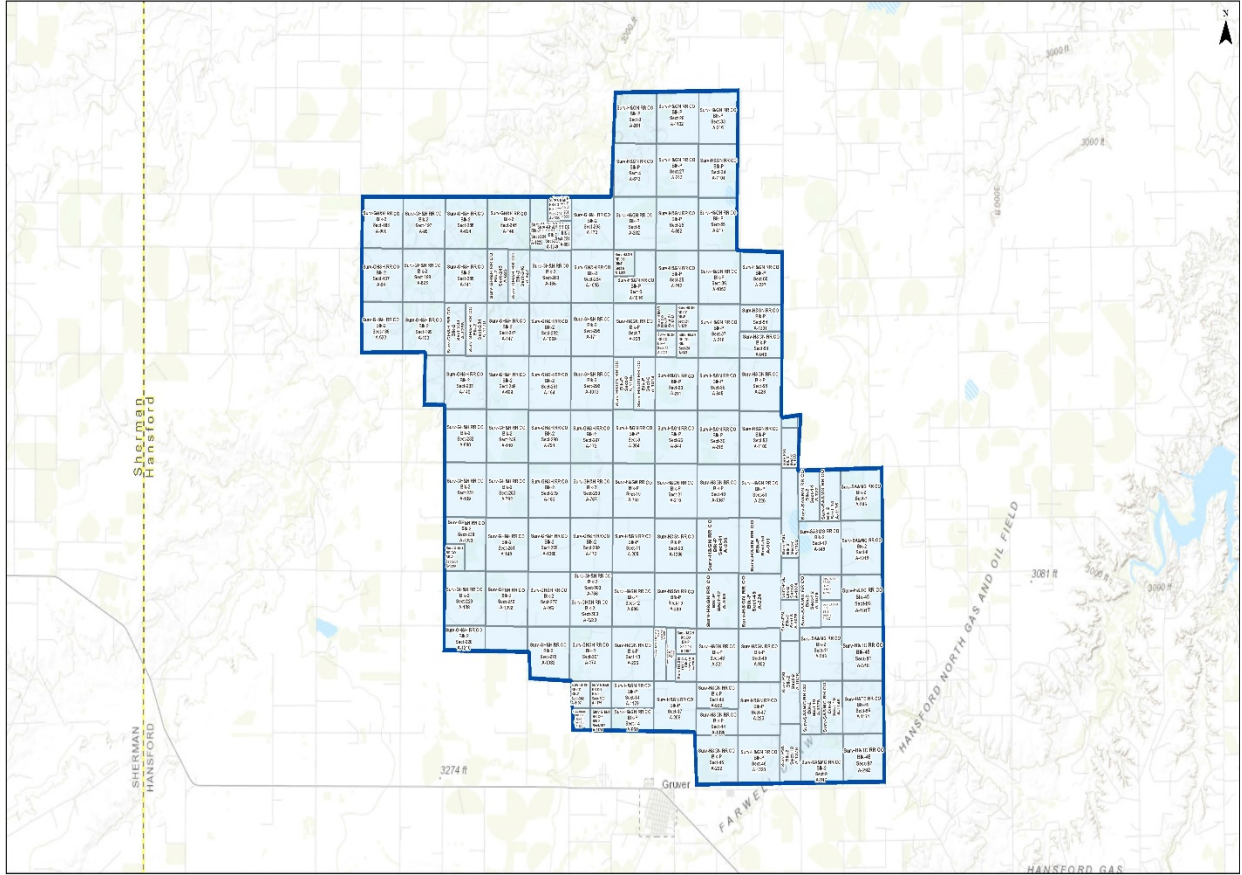
Estimated Cost of the Improvements: The estimated cost of the improvements being contemplated by Great Prairie Wind III, LLC is approximately \$210,284,208.00.

FOR DETAILED INFORMATION OR QUESTIONS CALL JONATHAN BAILEY AT 806-659-2535

CERTIFICATION

I certify that the above Notice of Tax Abatement Consideration (including the map and Exhibit "A") was posted at the Hansford County Hospital at a place readily accessible to the general public at all times on the ____ day of April, 2021, and pursuant to Texas Tax Code 312.207 and Chapter 551, Texas Government Code, said Notice remained so posted continuously for at least 30 days preceding the scheduled time of said Meeting.

Jonathan Bailey, CEO
Hansford County Hospital District



- Project Boundary
- Reinvestment Zone
- Texas Survey

Great Prairie III
Hansford, Texas

Exhibit Date: 4/6/2021



Exhibit "A"

ABSTRACT	SURVEY NAME	BLOCK	SECTION
195960	GH&H RR CO	2	188
19594	GH&H RR CO	2	187
195622	GH&H RR CO	2	186
195201	H&GN RR CO	P	3
1951102	H&GN RR CO	P	28
195216	H&GN RR CO	P	33
195673	H&GN RR CO	P	4
195213	H&GN RR CO	P	27
1951104	H&GN RR CO	P	34
19599	GH&H RR CO	2	197
195624	GH&H RR CO	2	236
195146	GH&H RR CO	2	245
1951249	GH&H RR CO	2	284
1951222	GH&H RR CO	2	284
195889	GH&H RR CO	2	284
1951388	GH&H RR CO	2	284
1951310	GH&H RR CO	2	284
1951386	GH&H RR CO	2	284
195170	GH&H RR CO	2	293
195202	H&GN RR CO	P	5
195892	H&GN RR CO	P	26
195217	H&GN RR CO	P	35
195623	GH&H RR CO	2	198
195141	GH&H RR CO	2	235
195625	GH&H RR CO	2	246
195947	GH&H RR CO	2	246
195165	GH&H RR CO	2	283
1951015	GH&H RR CO	2	294
1951289	H&GN RR CO	P	6
1951016	H&GN RR CO	P	6
195212	H&GN RR CO	P	25
1951052	H&GN RR CO	P	36
195227	H&GN RR CO	P	55
195100	GH&H RR CO	2	199
1951268	GH&H RR CO	2	234
1951170	GH&H RR CO	2	234
195147	GH&H RR CO	2	247
1951069	GH&H RR CO	2	282
195171	GH&H RR CO	2	295
195203	H&GN RR CO	P	7
1951212	H&GN RR CO	P	24
1951211	H&GN RR CO	P	24
195218	H&GN RR CO	P	37
1951301	H&GN RR CO	P	54

1951227	H&GN RR CO	P	24
195943	H&GN RR CO	P	24
1951267	H&GN RR CO	P	24
195946	H&GN RR CO	P	54
195692	GH&H RR CO	2	200
195140	GH&H RR CO	2	233
195689	GH&H RR CO	2	248
195164	GH&H RR CO	2	281
1951013	GH&H RR CO	2	296
1951165	H&GN RR CO	P	8
1951014	H&GN RR CO	P	8
195211	H&GN RR CO	P	23
195945	H&GN RR CO	P	38
195226	H&GN RR CO	P	53
195690	GH&H RR CO	2	232
195148	GH&H RR CO	2	249
195791	GH&H RR CO	2	280
195172	GH&H RR CO	2	297
195204	H&GN RR CO	P	9
195944	H&GN RR CO	P	22
195219	H&GN RR CO	P	39
1951109	H&GN RR CO	P	52
1951172	PSL	2	6
195139	GH&H RR CO	2	231
195792	GH&H RR CO	2	250
195163	GH&H RR CO	2	279
195767	GH&H RR CO	2	298
195768	H&GN RR CO	P	10
195210	H&GN RR CO	P	21
1951067	H&GN RR CO	P	40
195225	H&GN RR CO	P	51
1951152	PSL	2	7
195727	SA&MG RR CO	2	14
195346	SA&MG RR CO	2	7
1951135	SA&MG RR CO	2	14
1951093	GH&H RR CO	2	230
195149	GH&H RR CO	2	251
1951068	GH&H RR CO	2	278
195173	GH&H RR CO	2	299
195205	H&GN RR CO	P	11
1951066	H&GN RR CO	P	20
195220	H&GN RR CO	P	41
195901	H&GN RR CO	P	50
195349	SA&MG RR CO	2	13
1951019	SA&MG RR CO	2	8
1951209	GH&H RR CO	2	230
1951074	PSL	2	8

195138	GH&H RR CO	2	229
1951092	GH&H RR CO	2	252
195162	GH&H RR CO	2	277
1951230	GH&H RR CO	2	300
195766	GH&H RR CO	2	300
195995	H&GN RR CO	P	12
195209	H&GN RR CO	P	19
195903	H&GN RR CO	P	42
195224	H&GN RR CO	P	49
1951079	SA&MG RR CO	2	12
1951298	SA&MG RR CO	2	12
1951017	H&TC RR CO	45	80
1951075	PSL	2	8
1951147	SA&MG RR CO	2	12
1951210	GH&H RR CO	2	228
1951082	GH&H RR CO	2	276
195174	GH&H RR CO	2	301
195206	H&GN RR CO	P	13
1951081	H&GN RR CO	P	18
1951300	H&GN RR CO	P	18
1951197	H&GN RR CO	P	18
195221	H&GN RR CO	P	43
195902	H&GN RR CO	P	48
195348	SA&MG RR CO	2	11
195318	H&TC RR CO	45	81
1951076	PSL	2	9
1951184	H&GN RR CO	P	18
1951187	GH&H RR CO	2	302
1951175	GH&H RR CO	2	302
1951179	H&GN RR CO	P	14
195208	H&GN RR CO	P	17
195982	H&GN RR CO	P	44
195223	H&GN RR CO	P	47
1951078	SA&MG RR CO	2	10
1951146	SA&MG RR CO	2	10
1951171	H&TC RR CO	45	96
195870	GH&H RR CO	2	302
1951174	GH&H RR CO	2	302
195868	H&GN RR CO	P	14
1951336	H&GN RR CO	P	44
1951376	PSL	2	10
195222	H&GN RR CO	P	45
195347	SA&MG RR CO	2	9
1951320	H&GN RR CO	P	46
195292	H&TC RR CO	45	97