

**NOTICE OF TAX ABATEMENT CONSIDERATION
HANSFORD COUNTY HOSPITAL DISTRICT**

DATE: May 26, 2021

TIME: 6:00 P.M.

PLACE: Conference Room, Hansford County Hospital, 707 Rowland St., Spearman Texas 79081

PURPOSE: The Hansford County Hospital District will discuss and take possible action regarding a tax abatement agreement with Great Prairie Wind II, LLC, pursuant to Chapter 312 of the Texas Tax Code.

Property Owner and Applicant for Tax Abatement: Great Prairie Wind II, LLC

Reinvestment Zone: Great Prairie Wind II, LLC 2 Reinvestment Zone

Property in Reinvestment Zone: See attached map and legal description provided in Exhibit "A" attached hereto and incorporated herein for all purposes.

Anticipated Improvements: The general description of the nature of the improvements included in the agreement is as follows:

Great Prairie Wind II, LLC anticipates constructing a 188 MW wind farm of which 45 MW are planned to be in Hansford County. Improvements would include (but are not limited to) wind turbines, towers, foundations, transformers, pad mounts, underground collection systems, transmission lines, electrical interconnections, met towers, roads, O&M, building, electrical substation, control systems and all eligible ancillary and necessary equipment for commercial wind generation of electricity.

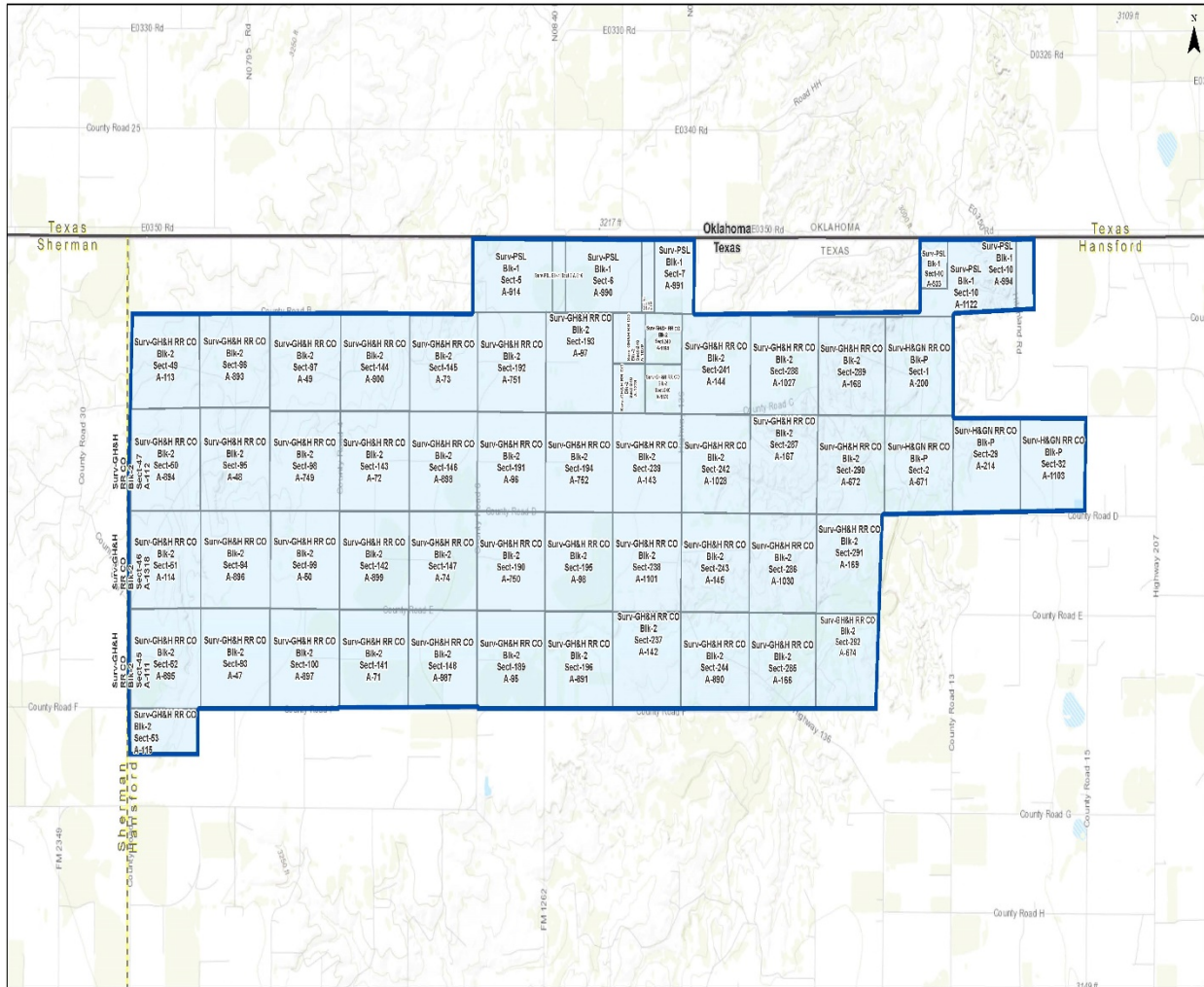
Estimated Cost of the Improvements: The estimated cost of the improvements being contemplated by Great Prairie Wind II, LLC is approximately \$42,056,842.00.

FOR DETAILED INFORMATION OR QUESTIONS CALL JONATHAN BAILEY AT 806-659-2535

CERTIFICATION

I certify that the above Notice of Tax Abatement Consideration (including the map and Exhibit "A") was posted at the Hansford County Hospital at a place readily accessible to the general public at all times on the ____ day of April, 2021, and pursuant to Texas Tax Code 312.207 and Chapter 551, Texas Government Code, said Notice remained so posted continuously for at least 30 days preceding the scheduled time of said Meeting.

Jonathan Bailey, CEO
Hansford County Hospital District



- Project Boundary
- Reinvestment Zone
- Texas Survey

Great Prairie II
Hansford, Texas

Exhibit Date: 4/8/2021



Exhibit "A"

ABSTRACT	SURVEY NAME	BLOCK	SECTION
195664	GH&H RR CO	2	36
195119	GH&H RR CO	2	61
195619	GH&H RR CO	2	84
19555	GH&H RR CO	2	109
1951097	GH&H RR CO	2	132
195106	GH&H RR CO	2	35
195665	GH&H RR CO	2	62
19542	GH&H RR CO	2	83
195865	GH&H RR CO	2	110
19566	GH&H RR CO	2	131
195866	GH&H RR CO	2	158
19590	GH&H RR CO	2	179
195120	GH&H RR CO	2	63
195860	GH&H RR CO	2	82
195?1	GH&H RR CO	2	34
19556	GH&H RR CO	2	111
1951293	GH&H RR CO	2	130
19580	GH&H RR CO	2	159
195857	GH&H RR CO	2	178
195864	GH&H RR CO	2	130
195863	GH&H RR CO	2	112
19565	GH&H RR CO	2	129
195867	GH&H RR CO	2	160
19589	GH&H RR CO	2	177
195105	GH&H RR CO	2	33
195862	GH&H RR CO	2	64
19541	GH&H RR CO	2	81
195126	GH&H RR CO	2	205
1951090	GH&H RR CO	2	228
195856	GH&H RR CO	2	206
195137	GH&H RR CO	2	227
195869	GH&H RR CO	2	254
195127	GH&H RR CO	2	207
195996	GH&H RR CO	2	226
195151	GH&H RR CO	2	255
1951181	GH&H RR CO	2	274
195999	GH&H RR CO	2	208
195136	GH&H RR CO	2	225
195997	GH&H RR CO	2	256
195121	GH&H RR CO	2	65

195861	GH&H RR CO	2	80
19557	GH&H RR CO	2	113
195853	GH&H RR CO	2	128
19581	GH&H RR CO	2	161
195858	GH&H RR CO	2	176
19540	GH&H RR CO	2	79
195885	GH&H RR CO	2	114
19564	GH&H RR CO	2	127
195852	GH&H RR CO	2	162
19588	GH&H RR CO	2	175
1951148	GH&H RR CO	2	66
195887	GH&H RR CO	2	78
19558	GH&H RR CO	2	115
1951294	GH&H RR CO	2	126
1951220	GH&H RR CO	2	126
19582	GH&H RR CO	2	163
195122	GH&H RR CO	2	67
195859	GH&H RR CO	2	174
195854	GH&H RR CO	2	126
19539	GH&H RR CO	2	77
195884	GH&H RR CO	2	116
19563	GH&H RR CO	2	125
195855	GH&H RR CO	2	164
195886	GH&H RR CO	2	68
19587	GH&H RR CO	2	173
195798	GH&H RR CO	2	212
195836	GH&H RR CO	2	212
1951149	GH&H RR CO	2	76
19559	GH&H RR CO	2	117
1951339	GH&H RR CO	2	124
195799	GH&H RR CO	2	124
1951302	GH&H RR CO	2	124
19583	GH&H RR CO	2	165
195123	GH&H RR CO	2	69
1951272	GH&H RR CO	2	172
195613	GH&H RR CO	2	172
1951303	GH&H RR CO	2	124
195180	GH&H RR CO	2	75
195797	GH&H RR CO	2	118
19562	GH&H RR CO	2	123
195611	GH&H RR CO	2	166
1951255	GH&H RR CO	2	166
1951150	GH&H RR CO	2	70

19586	GH&H RR CO	2	171
195644	GH&H RR CO	2	214
1951089	GH&H RR CO	2	74
195178	GH&H RR CO	2	71
195179	GH&H RR CO	2	73
195739	GH&H RR CO	3	2
195182	GH&H RR CO	3	3
195740	GH&H RR CO	2	72
195128	GH&H RR CO	2	209
195998	GH&H RR CO	2	224
195152	GH&H RR CO	2	257
1951050	GH&H RR CO	2	210
195135	GH&H RR CO	2	223
195129	GH&H RR CO	2	211
1951051	GH&H RR CO	2	222
1951266	GH&H RR CO	2	212
195130	GH&H RR CO	2	213
1951265	GH&H RR CO	2	214